

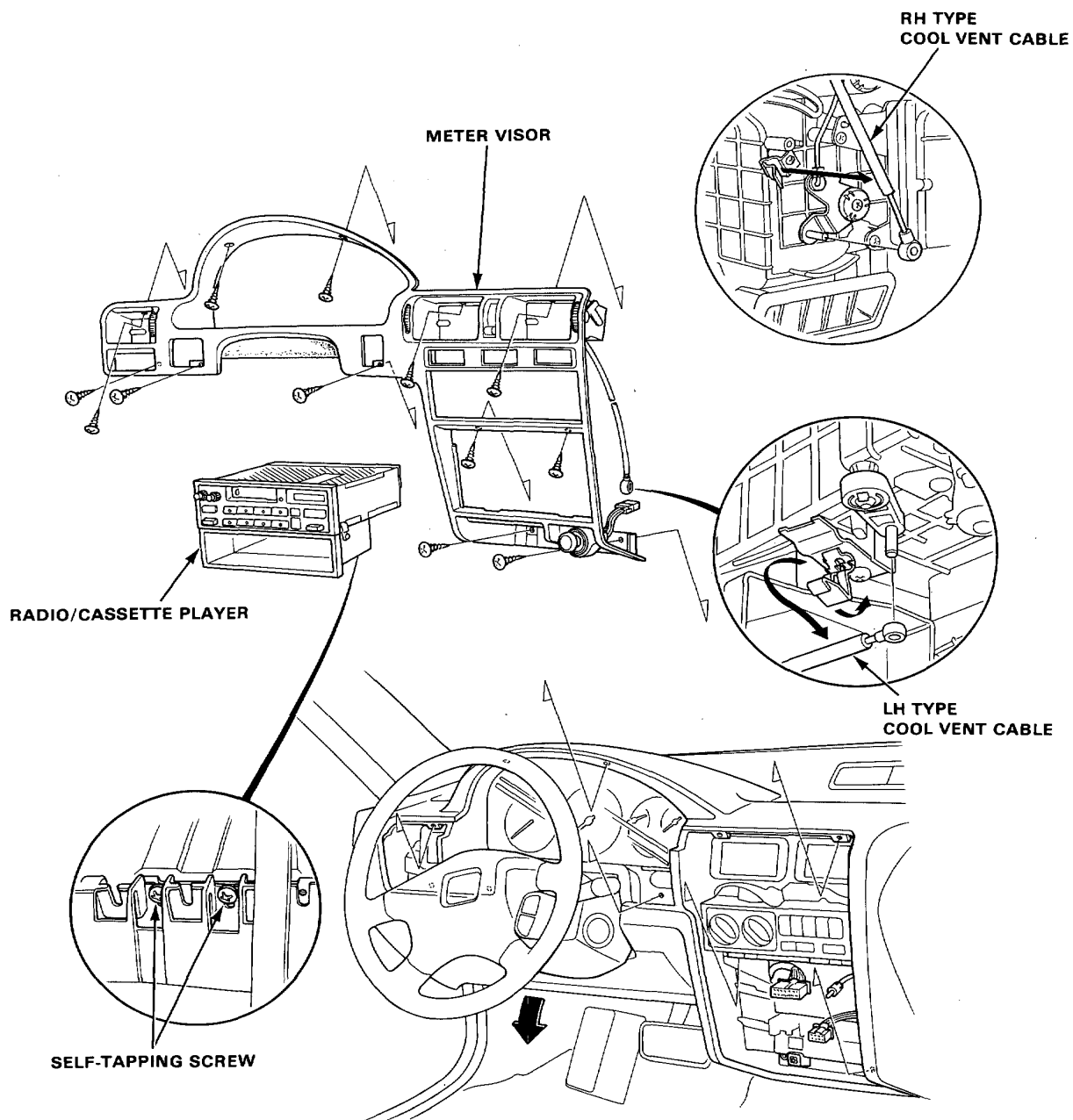
# Heater Control Panel

## Replacement (cont'd)

3. Remove the radio/cassette player and the meter visor. If a heater control panel is button type, release the cool vent cable from heater unit side.

NOTE: ● Loosen the self-tapping screws under the radio, and remove the radio/cassette player.

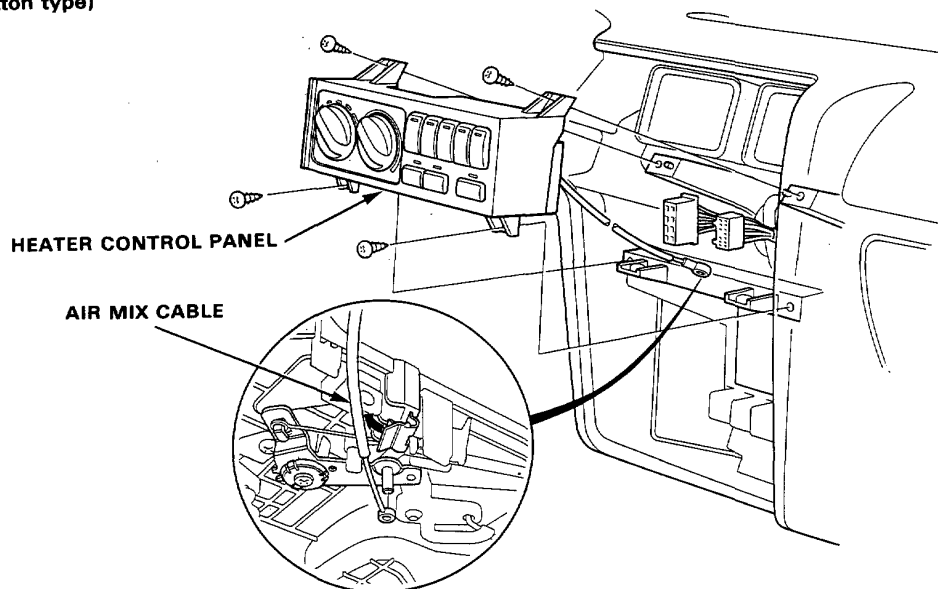
- Tilt the steering column down, then remove the meter visor.



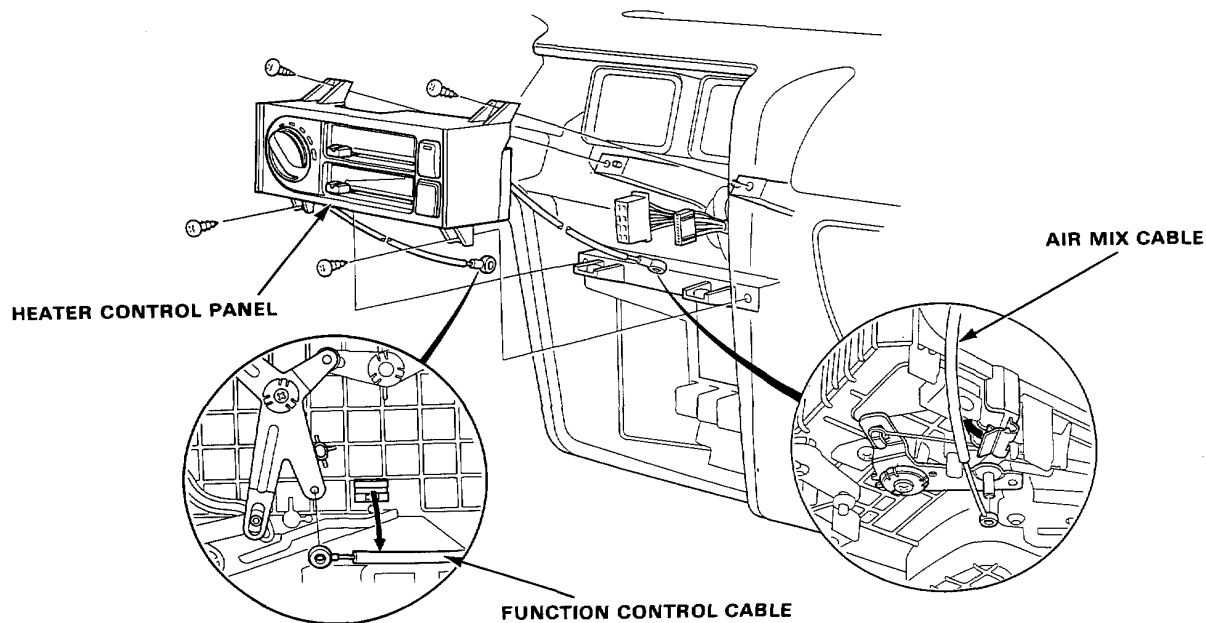


4. Disconnect the cables at the heater assembly.
5. Remove the self-tapping screws(4), pull out the heater control panel, disconnect the wire harness connectors, then remove the heater control panel.

(Button type)



(Lever type)

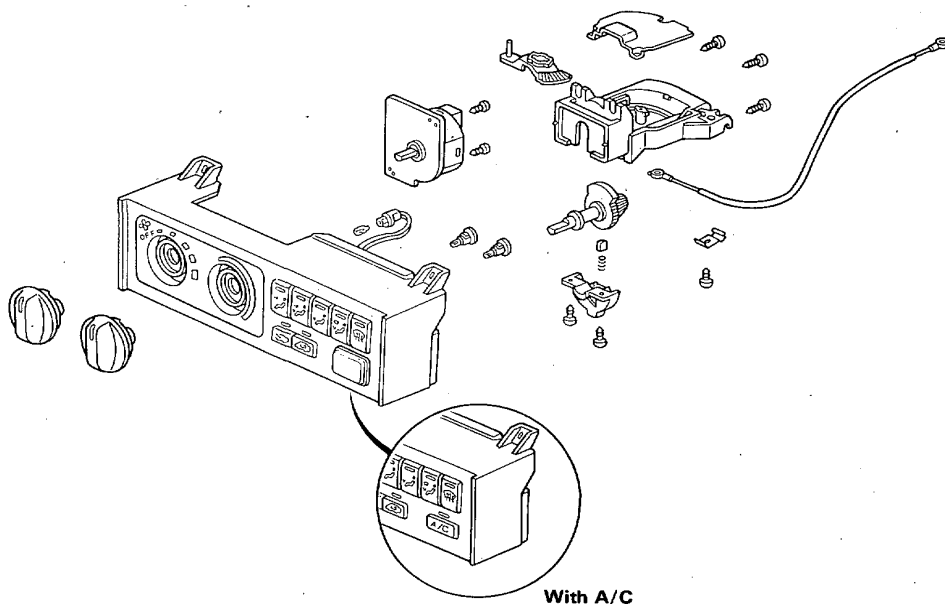


6. Install in the reverse order of removal, reconnect the cables, making sure they are properly adjusted (page 15-31, 32).

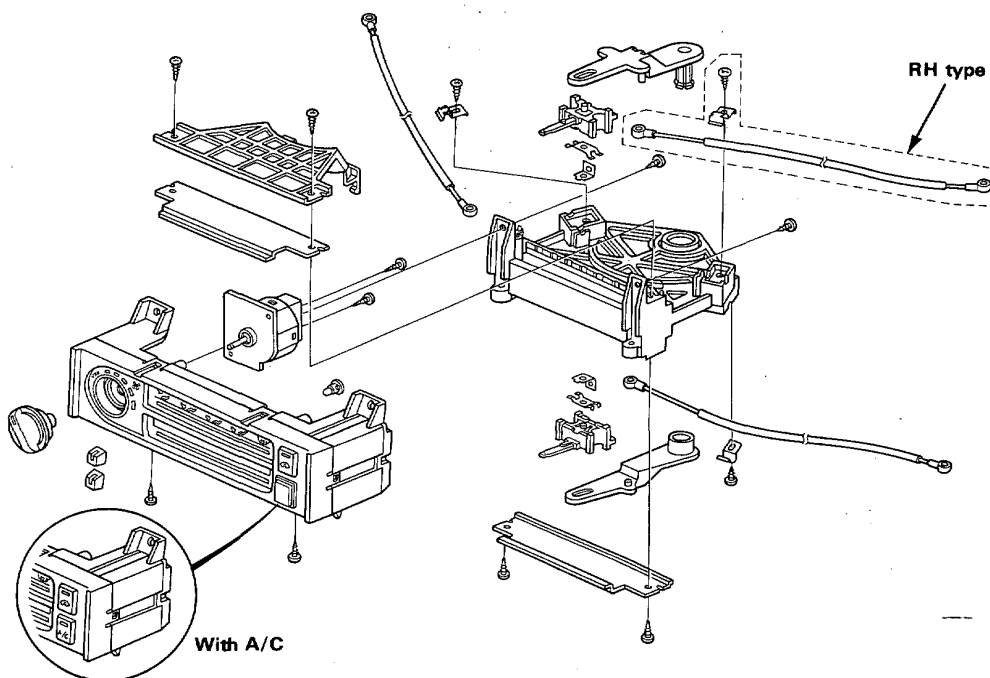
# Heater Control Panel

## Overhaul

(Button type)



(Lever type)



● Cable replacement (page 15-33)